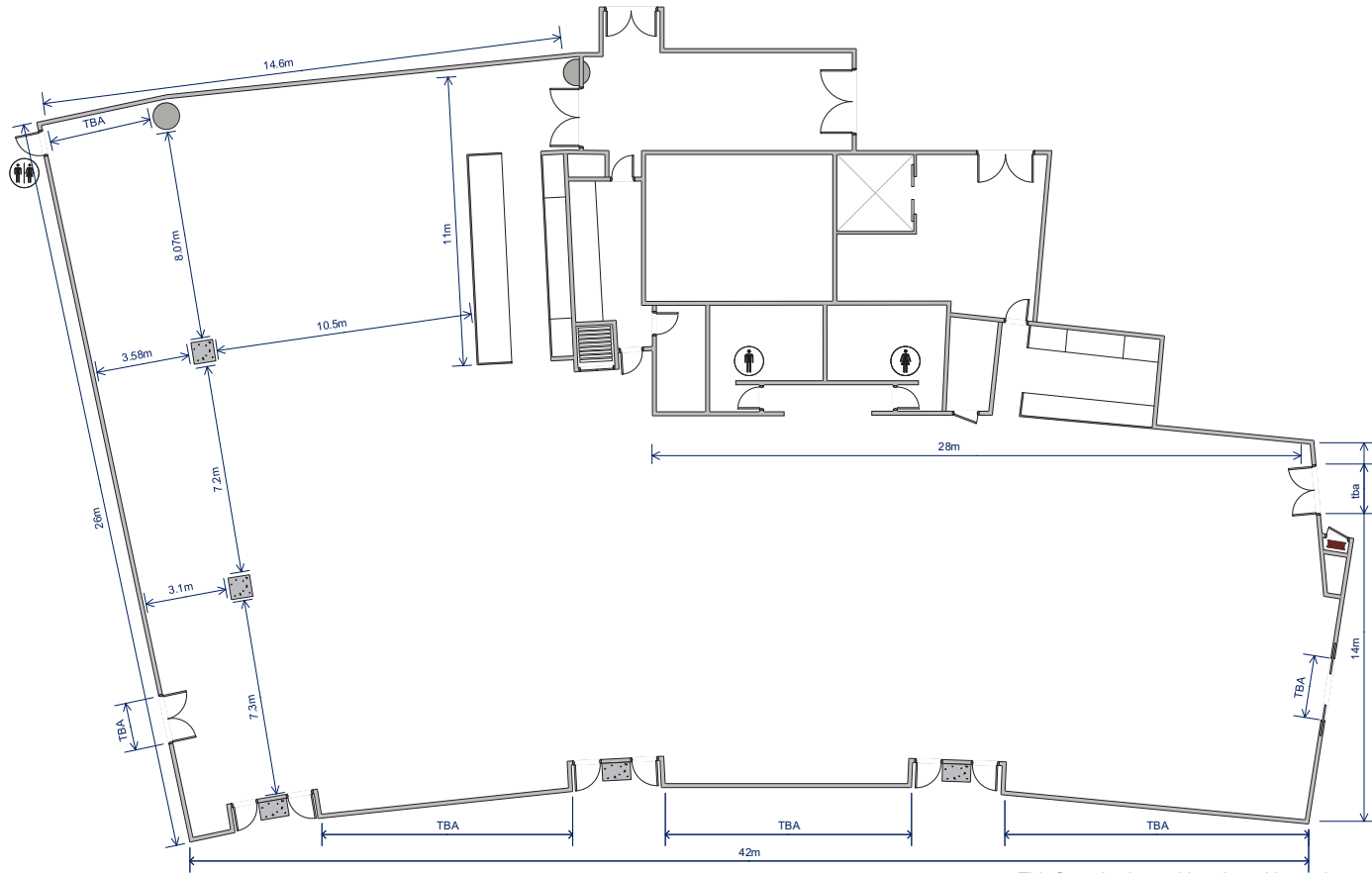


Olympic Room *Floorplans*




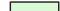


This floor plan is a guide only and is not drawn to scale
 1 meter clearance is required around all door and bar spaces

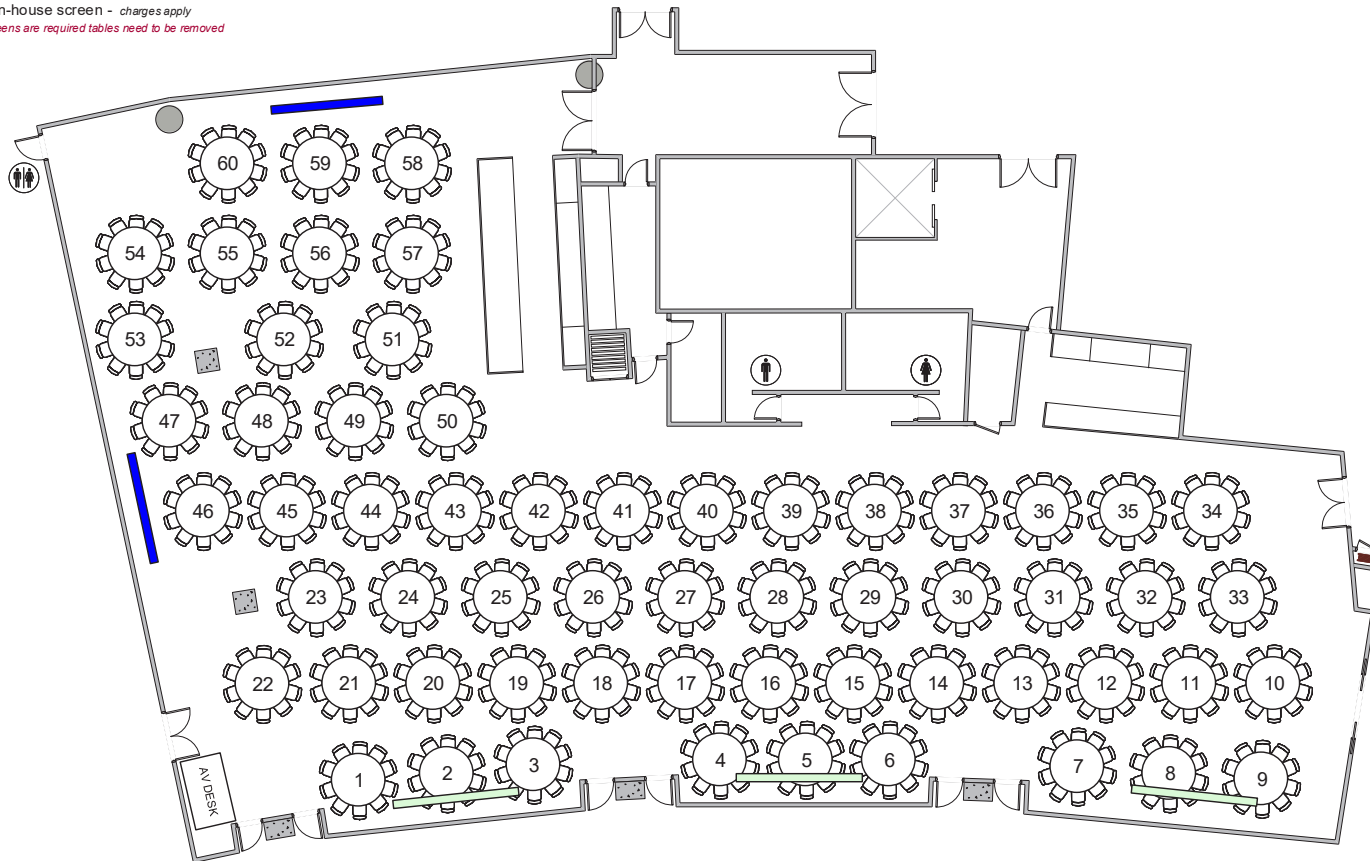


Scale: 1mm:200mm approx

 In-house screen

 In-house screen - charges apply


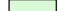
**If arena screens are required tables need to be removed*

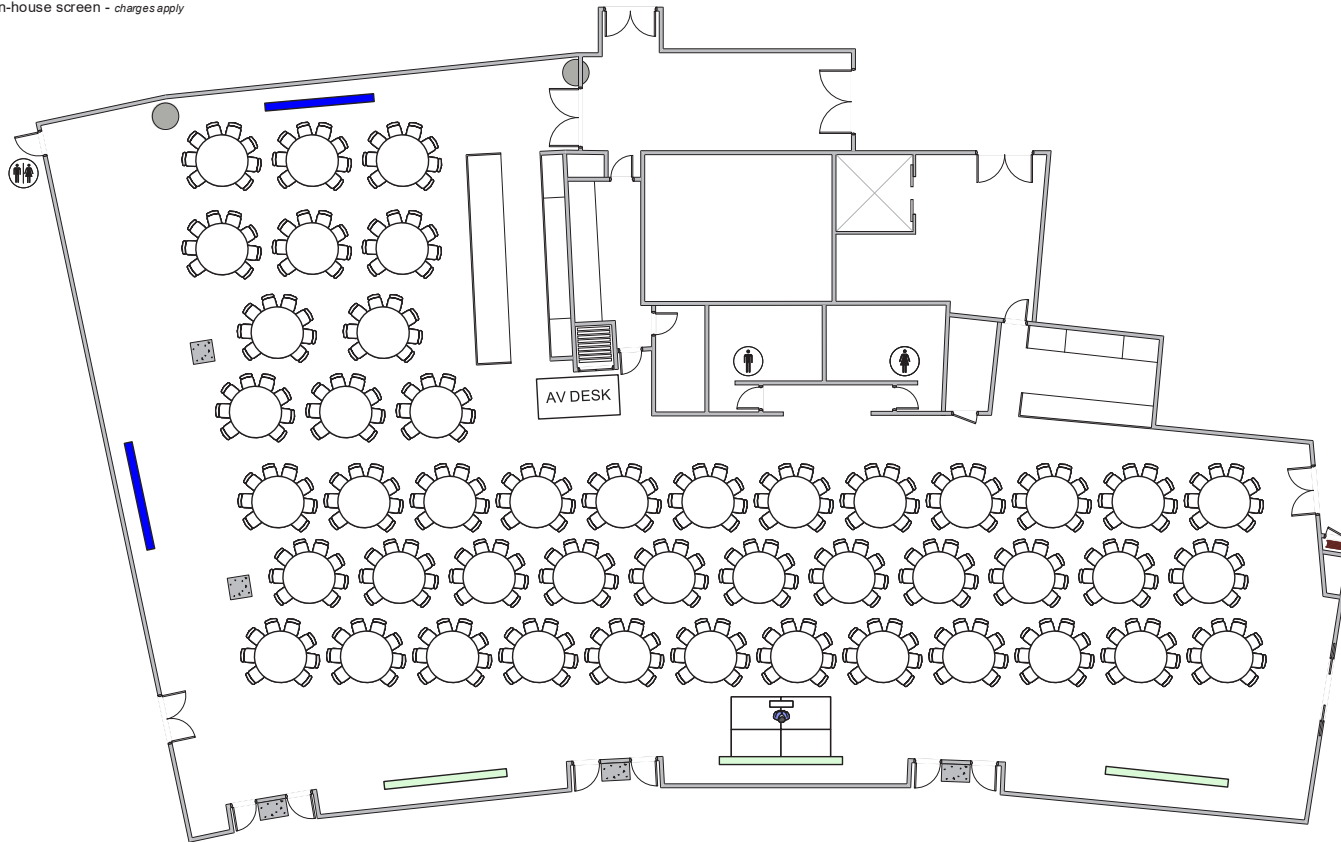


This floor plan is a guide only and is not drawn to scale
1 meter clearance is required around all door and bar spaces



Scale: 1mm:200mm approx


-  In-house screen
-  In-house screen - charges apply

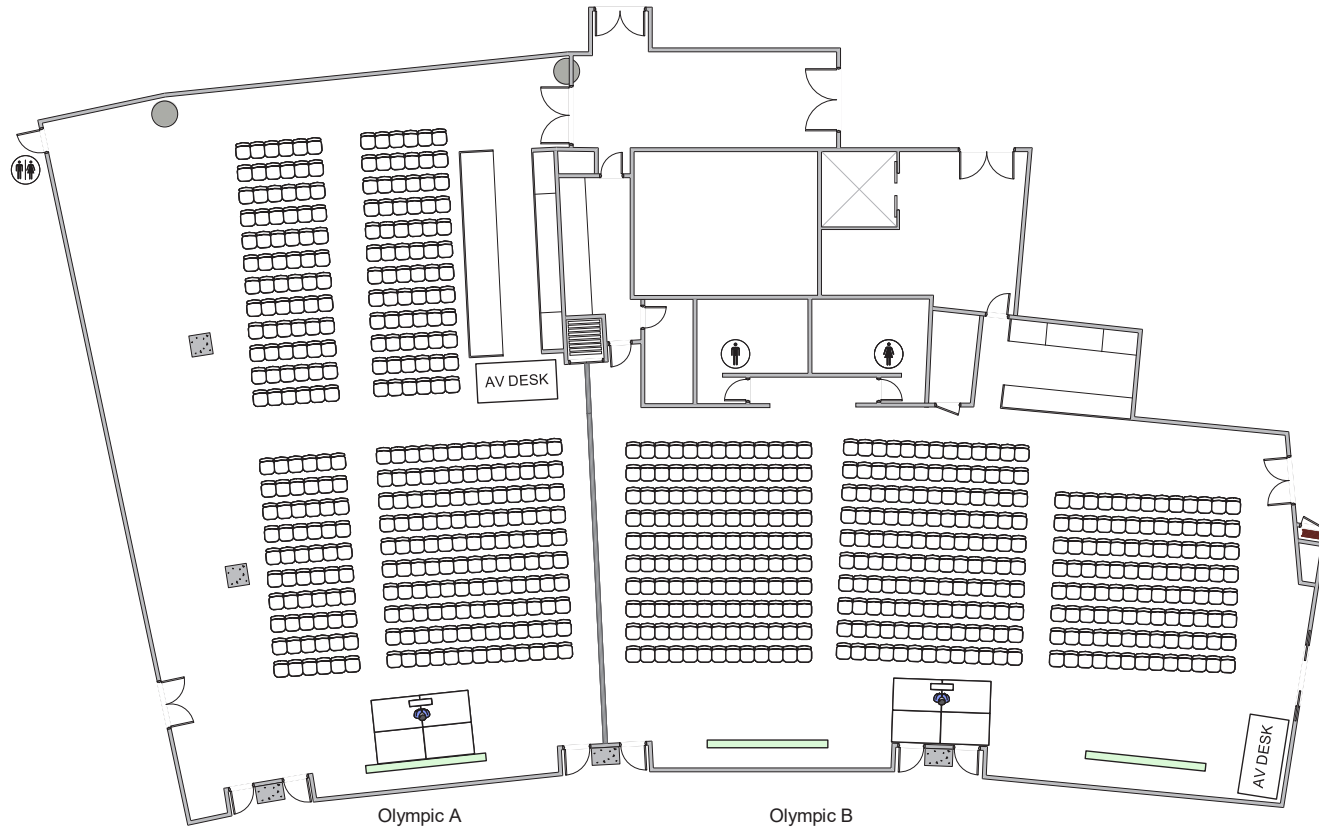


This floor plan is a guide only and is not drawn to scale
1 meter clearance is required around all door and bar spaces



Scale: 1mm:200mm approx

 In-house screen - charges apply



This floor plan is a guide only and is not drawn to scale
1 meter clearance is required around all door and bar spaces

