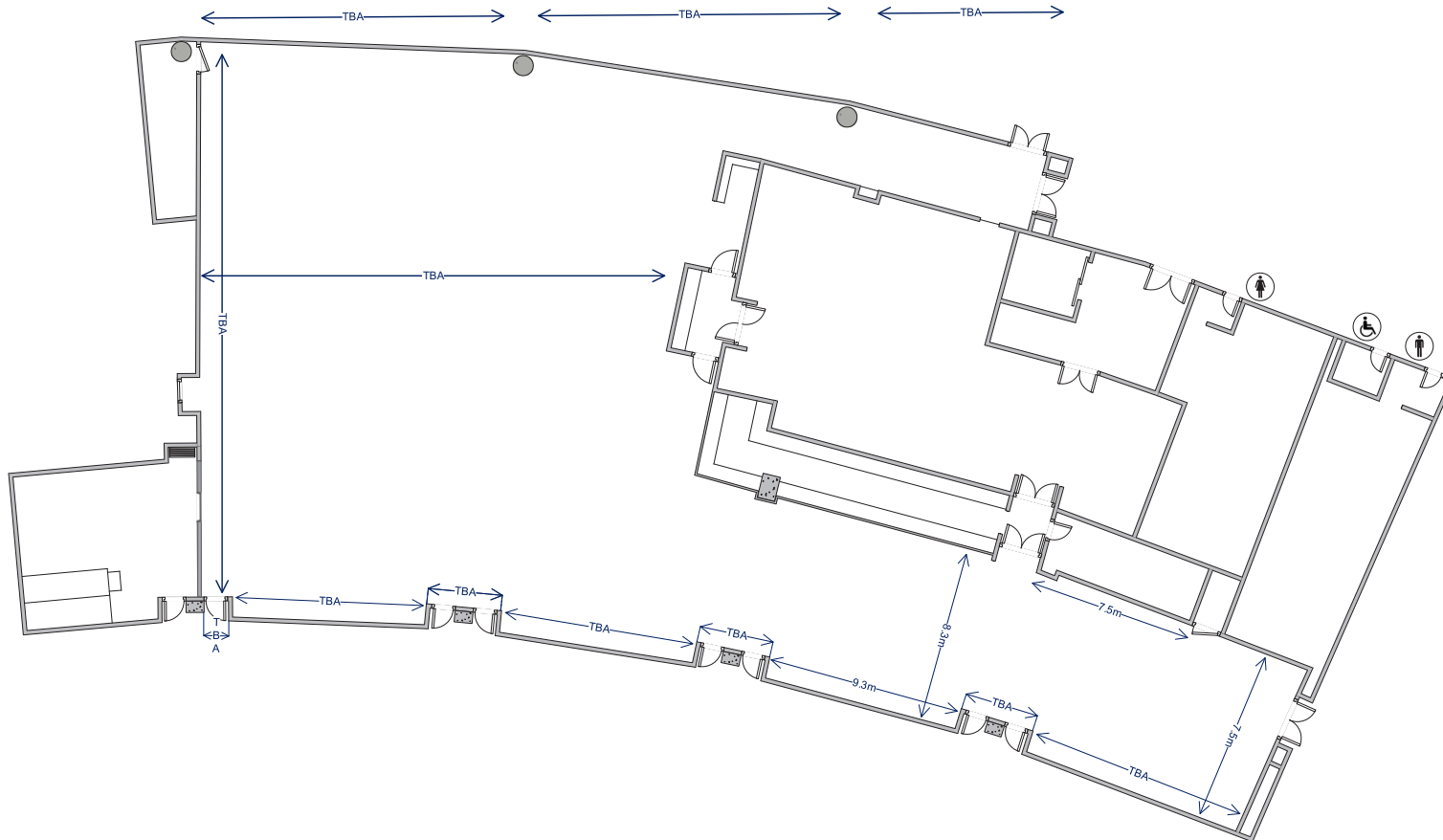


# Members' Dining room *Floorplans*



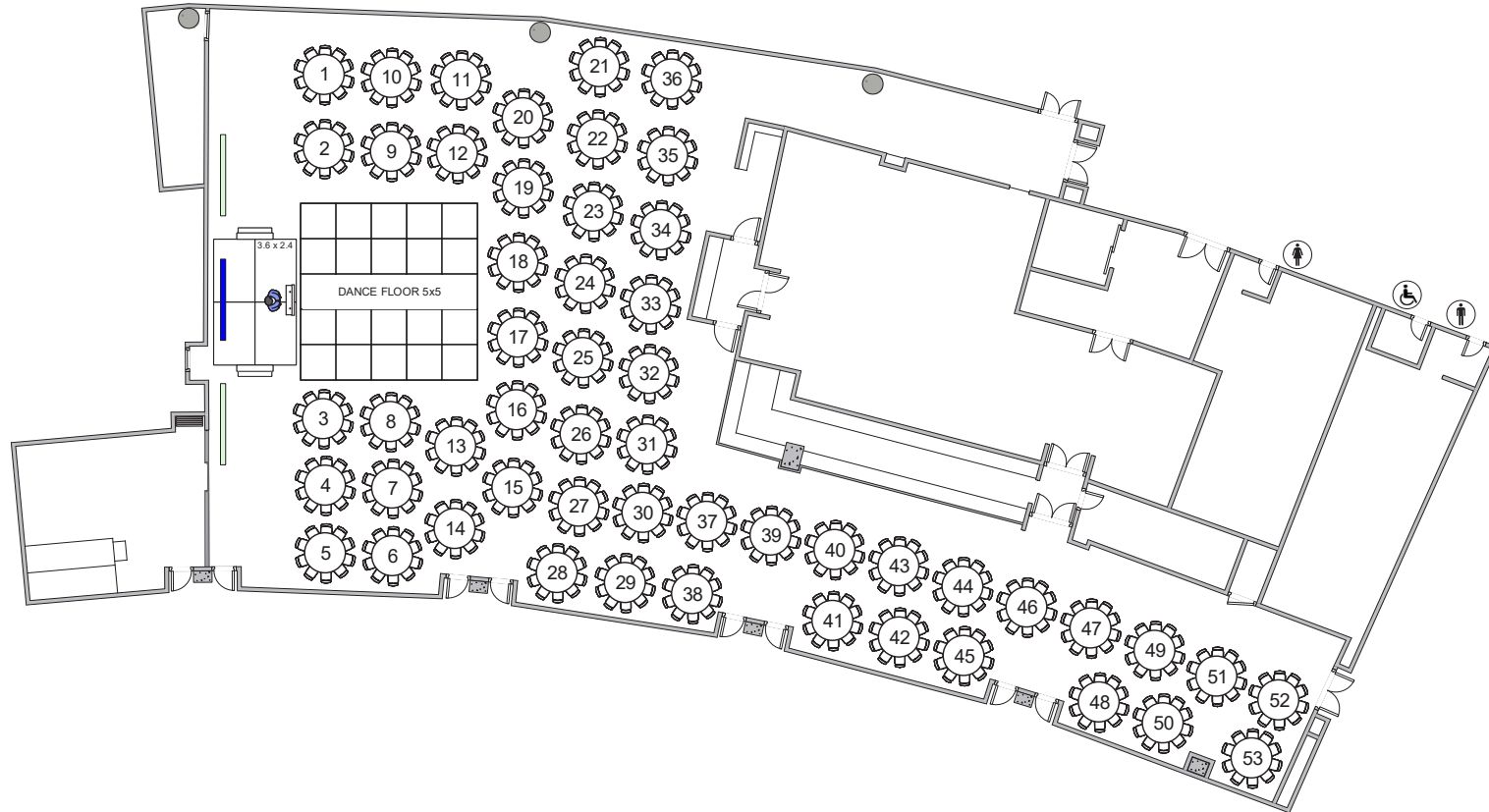


This floor plan is a guide only and is not drawn to scale  
 1 meter clearance is required around all door and bar spaces

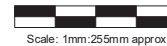


Scale: 1mm:255mm approx



■ In-house screen  
■ Dual screen - charges apply

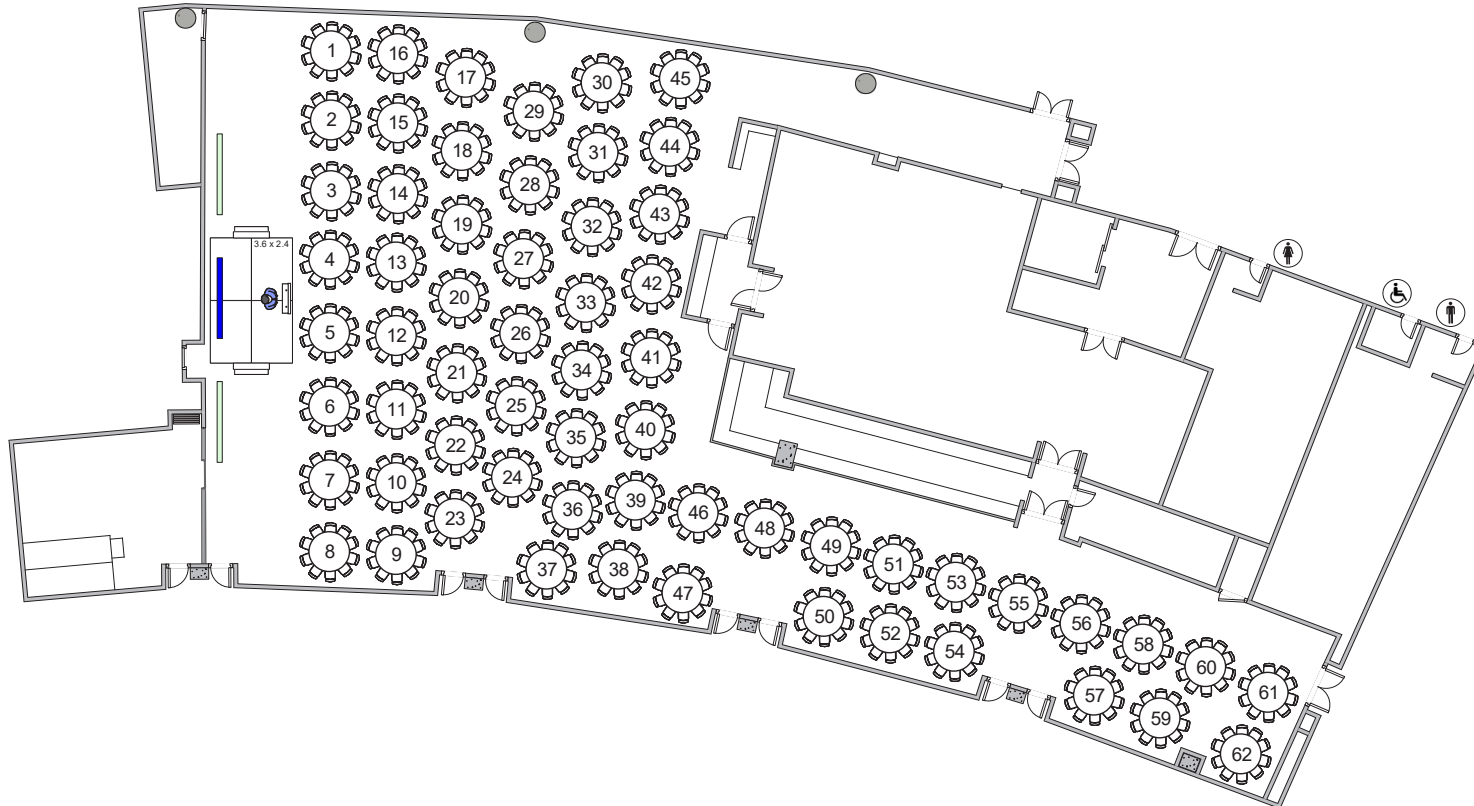


This floor plan is a guide only and is not drawn to scale  
1 meter clearance is required around all door and bar spaces



Scale: 1mm:255mm approx

 In-house screen  
 Dual screen – charges apply



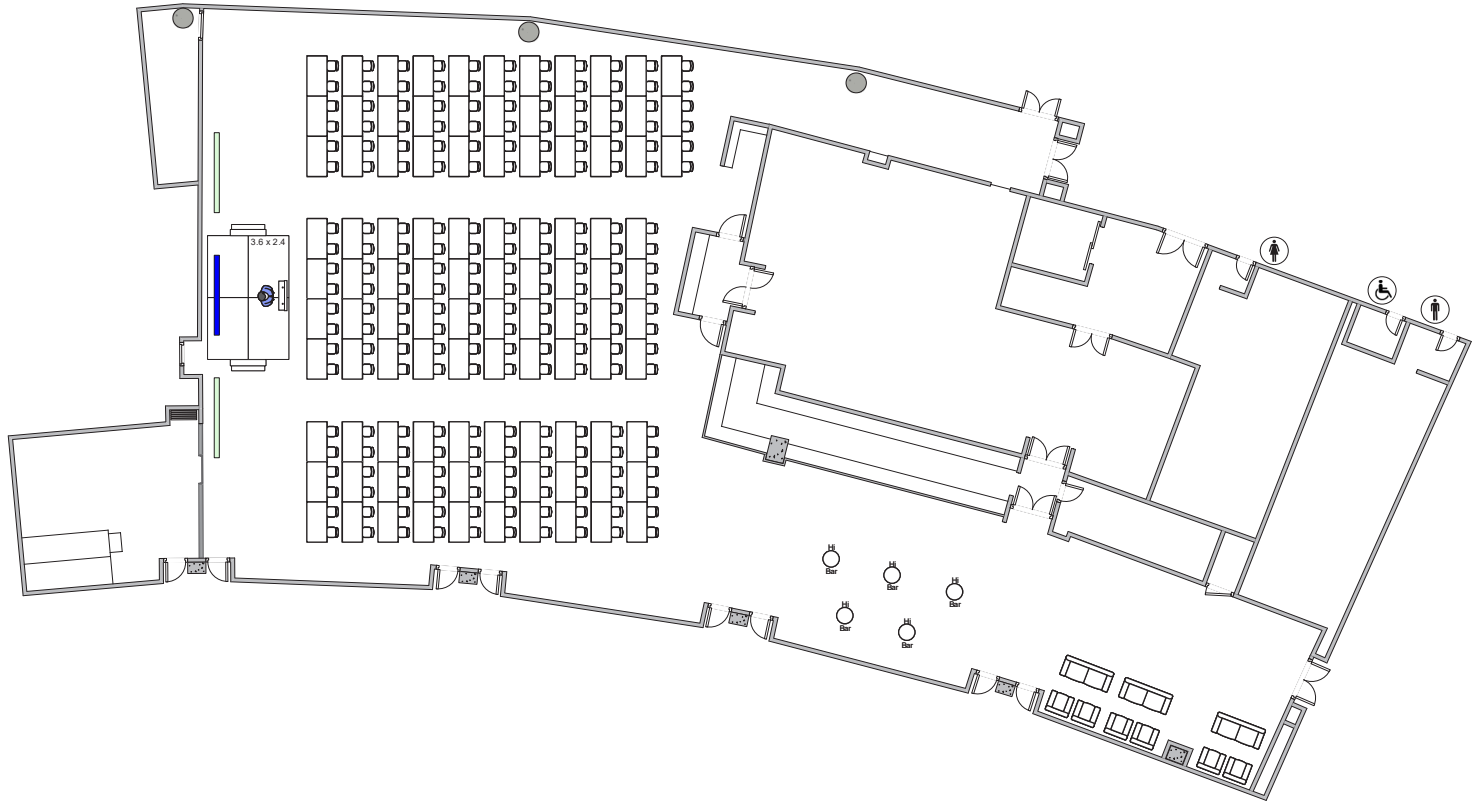
This floor plan is a guide only and is not drawn to scale  
1 meter clearance is required around all door and bar spaces



Scale: 1mm:255mm approx

- In-house screen
- Dual screen - charges apply

All trestle tables to be hired in via the client

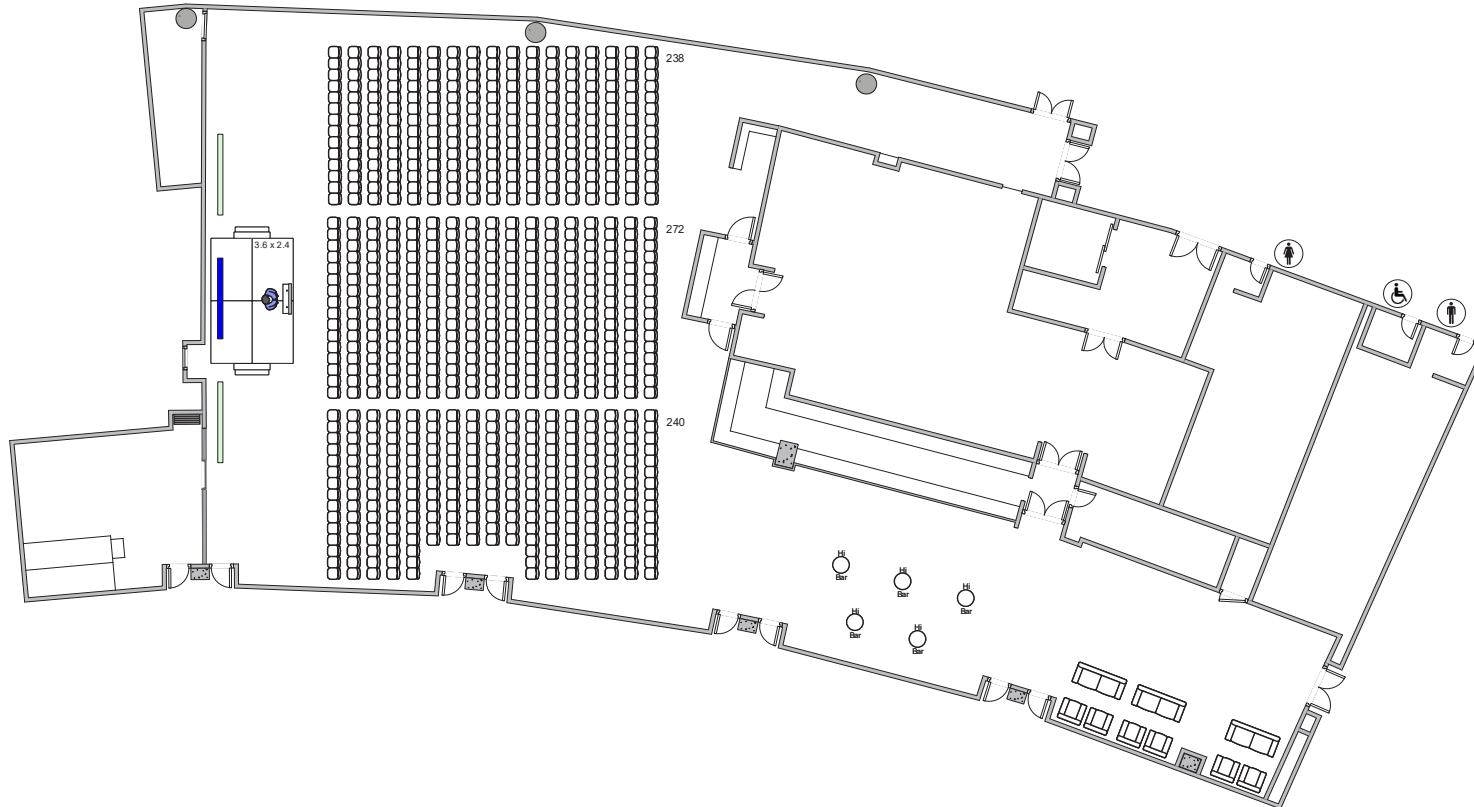


This floor plan is a guide only and is not drawn to scale  
1 meter clearance is required around all door and bar spaces



Scale: 1mm:255mm approx

■ In-house screen  
□ Dual screen - charges apply



This floor plan is a guide only and is not drawn to scale  
1 meter clearance is required around all door and bar spaces



Scale: 1mm:255mm approx